



Create catalog in SAP Ariba



Catalog formats

Usable catalog formats in SAP Ariba

Following catalog formats can be uploaded:

- BMEcat
- CIF
- EXCEL

Further details for each catalog format will be described on the following pages

BMEcat

General Links

- <https://de.wikipedia.org/wiki/BMEcat>
- <https://www.bme.de/initiativen/bmecat/download/>

BMEcat version 2005 is not supported in Ariba, only BMEcat 1.2 can be used!

BMEcat - specifics

Use the example header for reference

```
<?xml version="1.0" encoding="UTF-8"?>
<!DOCTYPE BMECAT SYSTEM "bmecat_new_catalog_1_2.dtd">
<BMECAT version="1.2" xmlns="http://www.bmecat.org/bmecat/1.2/bmecat_new_catalog">
  <HEADER>
  <CATALOG>
    <LANGUAGE>deu</LANGUAGE>
    <CATALOG_ID>Musterkatalog</CATALOG_ID>
    <CATALOG_VERSION>001.001</CATALOG_VERSION>
    <CURRENCY>EUR</CURRENCY>
  </CATALOG>
  <BUYER>
    <BUYER_ID type="buyer_specific">AN -T</BUYER_ID>
    <BUYER_NAME> </BUYER_NAME>
  </BUYER>
  <SUPPLIER>
    <SUPPLIER_ID type="buyer_specific">ANxxxxxxxxxx</SUPPLIER_ID>
    <SUPPLIER_NAME>Musterfirma GmbH</SUPPLIER_NAME>
    <ADDRESS type="supplier">
      <CONTACT>Max Mustermann</CONTACT>
      <STREET>Musterstraße 999</STREET>
      <ZIP>4020</ZIP>
      <CITY>Linz</CITY>
      <COUNTRY>AT</COUNTRY>
      <PHONE>+43xxxxxx</PHONE>
      <FAX>+43xxxxxx</FAX>
      <URL>www.musterhausen.at</URL>
    </ADDRESS>
  </SUPPLIER>
</HEADER>
</BMECAT>
```

Enter Ariba Network ID (ANID) and Buyer name for customer
"-T" at the end is used for uploads in test mode

Enter your Ariba Network ID (ANID) and supplier name
"-T" at the end of the ANID can be used for uploads in test mode

BMEcat – Price information

Article pricing in Ariba only allows price type „net_customer“

```
<ARTICLE_PRICE price_type="net_customer">  
<PRICE_AMOUNT>0.40</PRICE_AMOUNT>  
<PRICE_CURRENCY>EUR</PRICE_CURRENCY>  
<TAX>0.20</TAX>
```

All other price types that can be used in BMEcat are not supported in Ariba!

BMEcat – Classification information

To add classification information (eCI@ss, UNSPSC...) in BMEcat add following tags to the „ARTICLE_FEATURES“ of each article:

```
<ARTICLE_FEATURES>  
<REFERENCE_FEATURE_SYSTEM_NAME>[REDACTED]</REFERENCE_FEATURE_SYSTEM_NAME>  
<REFERENCE_FEATURE_GROUP_ID>[REDACTED]</REFERENCE_FEATURE_GROUP_ID>  
</ARTICLE_FEATURES>
```

REFERENCE_FEATURE_SYSTEM_NAME defines the classification base itself (e.g. UNSPSC)

REFERENCE_FEATURE_GROUP_ID defines the corresponding classification values (e.g. 32101631)

Please check together with your customer which classification codes should be used!

CIF

CIF is the abbreviation of „Catalog Interchange Format“ and is used for exchanging catalog information based.

CIF files are very similar to csv files and can be converted easily using Excel.

CIF – Using the excel template

The excel template has two main sections – header and data

| | A | B | C | D | E | F | G | H | I |
|----|--------------------------------|------------------|----------------------|--------------------------|---------------------|------------|-----------------|-----------|-------------------|
| 1 | CIF_I_V3.0 | | | Filename: | C:\temp\TestCif.Cif | | | | |
| 2 | CHARSET: UTF-8 | | | | | | | | |
| 3 | LOADMODE: F | | | | | | | | |
| 4 | CODEFORMAT: CUSTOM | | | GenerateCif | | | | | |
| 5 | CURRENCY: EUR | | | | | | | | |
| 6 | SUPPLIERID_DOMAIN: NETWORKID | | | | | | | | |
| 7 | ITEMCOUNT: 1 | | | | | | | | |
| 8 | TIMESTAMP: 2018-08-22 10:40:00 | | | | | | | | |
| 9 | UNUOM: TRUE | | | | | | | | |
| 10 | COMMENTS: | | | | | | | | |
| 11 | FIELDNAMES: Supplier ID | Supplier Part ID | Manufacturer Part ID | Item Description | SPSC Code | Unit Price | Unit of Measure | Lead Time | Manufacturer Name |
| 12 | DATA | | | | | | | | |
| 13 | Axxxxxxxxxxxx | 12345 | | Long description of item | 23110701 | 14.22 | EA | 5 | Producer ABC |
| 14 | ENDOFDATA | | | | | | | | |

Rows 1 to 11 are reserved for the header data.

The header data should not be changed without notification to the customer (except row 8 and row 10)!

Starting with row 12 and the keyword „DATA“ all catalog items can be defined.

At the end of the file it's mandatory to have „ENDOFDATA“ as keyword, otherwise the catalog upload can't finish

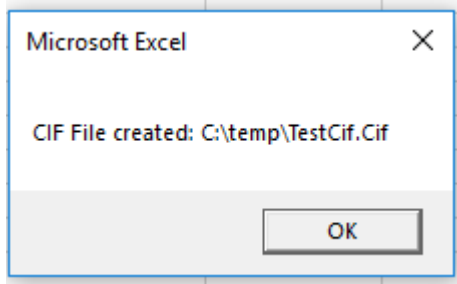
CIF – Using the excel template

The „Filename“ in field E1 is used to define the output path and output name of the resulting CIF file.

Generation of the CIF file is started using the button „GenerateCif“

| D | E |
|--|---------------------|
| Filename: | C:\temp\TestCif.Cif |
| <input type="button" value="GenerateCif"/> | |

As result following message is shown in Excel:



CIF – Using the excel template

Fields shown in **bold** letters are mandatory fields

| FIELDNAMES: Supplier ID | Supplier Part ID | Manufacturer Part ID | Item Description | SPSC Code | Unit Price | Unit of Measure | Lead Time |
|--------------------------------|-------------------------|-----------------------------|-------------------------|------------------|-------------------|------------------------|------------------|
|--------------------------------|-------------------------|-----------------------------|-------------------------|------------------|-------------------|------------------------|------------------|

Further information regarding the usage of the field is available in the comments

| COMMENTS: |
|--------------------------------|
| FIELDNAMES: Supplier ID |
| DATA |
| Axxxxxxxxxxxx |
| ENDOFDATA |

Required field

Supplier ID as specified by the SUPPLIERID_DOMAIN field in the header. Typically a NetworkID number.

Type: String
Length: 255

CIF – Mandatory fields

| Field name | Example | Description |
|------------------|-------------------------------|---|
| SupplierID | AN00011001100 | Ariba Network ID (ANID), for test mode „-T“ is required at the end (AN00011001100-T) |
| Supplier Part ID | 0XBEW0123 | Unique part identifier, can only be used once in the catalog |
| Item description | Hexagon nut M32 heavy duty | Long description text of the item |
| SPSC code | 23110701 | Classification code of the item, dependent on the classification code base (e.g. eClass 7.1) → defined by customer! |
| Unit price | 7.11 | Price per unit → do not add currency in this field, do not use comma as decimal separator! |
| Unit of measure | EA | Unit of measure for the item, based on UNUOM |

CIF – Check encoding of CIF file

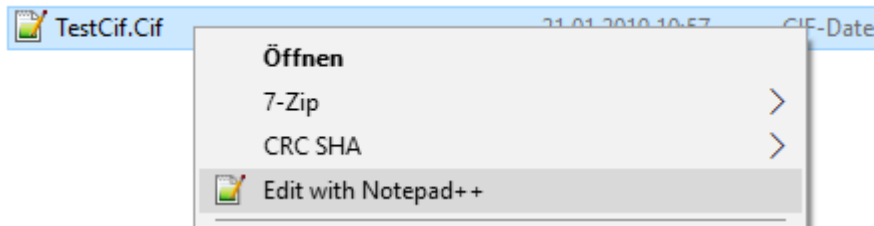
For all catalog articles it is mandatory to ensure correct UTF-8 encoding in the resulting CIF file.

Otherwise all non-UTF-8 characters (e.g. Ä, Ö,...) are not displayed correctly.

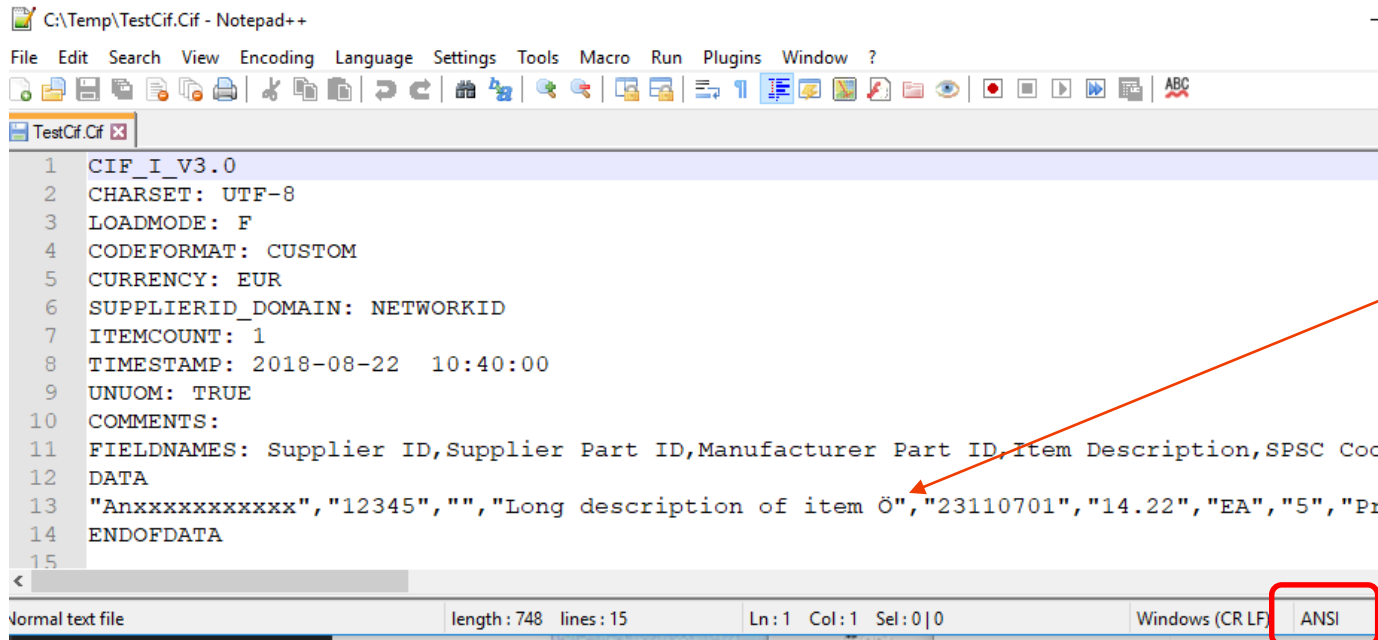
The encoding can be checked and converted easily using the free tool „Notepad++“
<https://notepad-plus-plus.org/>

CIF – Check encoding of CIF file

Open resulting CIF file in Notepad++



Current encoding is shown on the bottom of the window



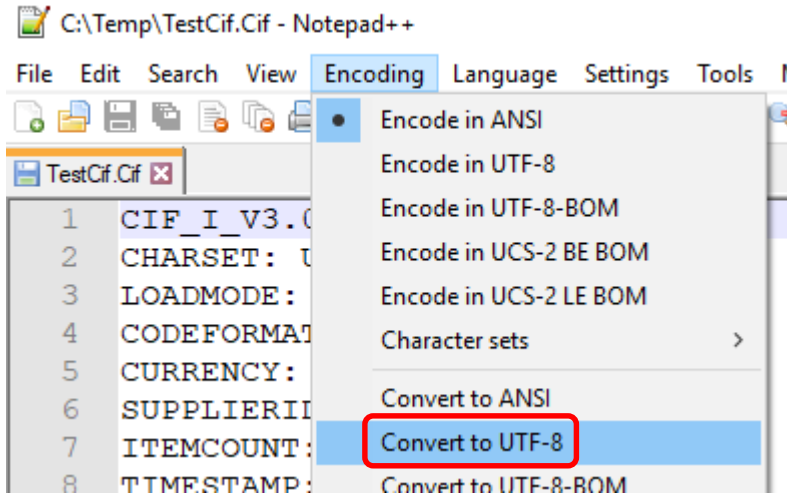
```
1 CIF_I_V3.0
2 CHARSET: UTF-8
3 LOADMODE: F
4 CODEFORMAT: CUSTOM
5 CURRENCY: EUR
6 SUPPLIERID_DOMAIN: NETWORKID
7 ITEMCOUNT: 1
8 TIMESTAMP: 2018-08-22 10:40:00
9 UNUOM: TRUE
10 COMMENTS:
11 FIELDNAMES: Supplier ID,Supplier Part ID,Manufacturer Part ID,Item Description,SPSC Coc
12 DATA
13 "Anxxxxxxxxxxxx", "12345", "", "Long description of item Ö", "23110701", "14.22", "EA", "5", "Pr
14 ENDOFDATA
15
```

Normal text file length : 748 lines : 15 Ln : 1 Col : 1 Sel : 0 | 0 Windows (CR LF) ANSI

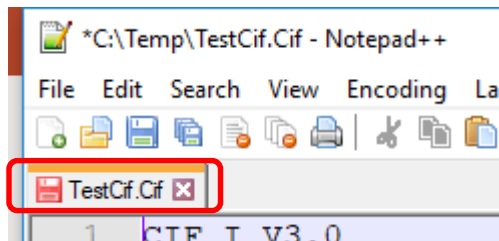
Due to the „Ö“ in the file the encoding is „ANSI“

CIF – Change encoding of CIF file

The encoding can be converted automatically



File is in changed state → save



Excel

Ariba provides an Excel template which can also be used to quickly set up a catalog

The Excel template has 4 sheets available



After filling out the „Headers“ and „Items“ sheet the „Instructions“ and „Sample Formats“ can be deleted to reduce the file size (Excel upload has a limitation of 1MB)



Upload catalog in SAP Ariba

Upload catalog in SAP Ariba

Login to supplier account on <https://supplier.ariba.com>

Switch to „Catalogs“ and select „Create Standard“

The screenshot shows the SAP Ariba interface. At the top, the header 'Ariba Network' is displayed on the left, and a 'Test Mode' indicator is on the right. Below the header is a navigation menu with options: HOME, INBOX, OUTBOX, CATALOGS (highlighted with a red box), REPORTS, and MESSAGES. Below this is another 'Ariba Network' header with the same navigation menu, where 'CATALOGS' is also highlighted with a red box. Underneath, the 'Catalogs' section title is followed by a descriptive text: 'Manage catalogs for your customers using the catalog dashboard. Catalog files must be CIF, cXML, or Excel files'. Below this text is a table with columns: Customer Name ↑, Catalog Name, Version, and File Name. At the bottom of the interface, there are three buttons: 'Create Standard' (highlighted with a red box), 'Create Punchout Only', and 'Refresh'.

Upload catalog in SAP Ariba

Enter „Catalog Name“ (Description and Commodities are optional) and click „Next“

Create a New Catalog

Next

Exit

Enter a catalog name and descriptive text. Customers can search using this information. Add commodity codes to your catalog. * indicates required field

1 Details

2 Subscriptions

3 Content

Catalog Name: *

Created By:
Date Created: Monday 21 Jan 2019 9:07 AM GMT+01:00

Description:

Characters left: 1000

The maximum number of characters allowed is 1000, including spaces.

Commodities: ⓘ

| Description |
|-------------|
| No items |

↳ |

Next

Exit

The catalog name is shown to the customer as catalog subscription name.

Ariba recommends using the format „SupplierName_CustomerName“. Check together with the customer if another naming format is required!

Before creating a new catalog for a customer please consider updating the old one!

Upload catalog in SAP Ariba

Select catalog visibility (private or public) and click „Next“

The screenshot shows the 'Create a New Catalog' page in SAP Ariba. The top navigation bar includes 'Ariba Network', 'Test Mode', and 'Company Settings'. The main heading is 'Create a New Catalog'. On the left, there are three steps: '1 Details', '2 Subscriptions', and '3 Content'. The 'Next' button is highlighted with a red box. The 'Private' visibility option is selected.

1 Details

2 Subscriptions

3 Content

Add customers and set the catalog visibility for customers. Click the customer's name to view validation rules on your customer's site.

You can receive status updates on catalogs, including catalog errors from your customer through email. To receive emails, click [Manage Profile](#) and enter the email address in the Email notification section.

Visibility: **Private** - Only the selected customers that have a trading relationship with you can view and receive the catalog
 Public - All customers can view the catalog. Customers that have a trading relationship with you can also receive the published catalog

Customers

| <input type="checkbox"/> | Customers ↑ | Catalog Validation Rules | Validation Status for Version 1 |
|--------------------------|-------------|--------------------------|---------------------------------|
| <input type="checkbox"/> | | View | Pending Validation |

All customers that already accepted the TRR (trading relationship request) are shown in the „Customers“ section and can be selected

Upload catalog in SAP Ariba

Choose „Catalog File Format“ (CIF/BMEcat/Excel) and choose the „Catalog File“ for upload

Ariba Network

Create a New Catalog

1 Details

2 Subscriptions

3 Content

UPLOAD YOUR CATALOG AND ATTACHMENT FILES

Catalog File Format: CIF

Catalog File: Choose File No file chosen

Images and Attachments File: Choose File No file chosen

! After you click, Validate and Publish, please wait for the catalog to finish uplo:

Validate and Publish

Click „Validate and Publish“ → The catalog file will be uploaded, parsed and checked for errors



Simon Gstöttenmayr

mobile +43 699 164 268 63
simon.gstoettenmayr@cnt-online.com, www.cnt-online.com

